

GENERAL SPECIFICATIONS

TYPE

American Ford-based 6-cylinder in line vertical 4 stroke, overhead-valve, turbo charged and intercooled diesel engine. Merlin 450 rated 450 HP up to 2850 rpm maximum.

BORE/STROKE

4.40 ins. x 5.20 ins.

DISPLACEMENT CAPACITY

474 cubic ins.: 7.8 litres

COMPRESSION RATIO

16.7:1

FUEL SYSTEM

Direct injection Bosch in-line plunger type pump with boost control. Plunger type lift pump and final fuel filtration.

OIL FILTER

Full flow dual spin-on filters.

OIL CAPACITY

21.0 U.S. Quarts: 20.0 litres

TURBOCHARGER

Holset turbocharger with patented Merlin intercooler.

RAW WATER SYSTEM

Stainless steel oil cooler. Gear driven Jabsco raw water pump coupled with 316L SS tubing. Water jacketed stainless steel exhaust manifold.

ELECTRICAL SYSTEM

12 Volt in standard incorporating 65 amps Motorola alternator. System incorporates over-heat, low oil pressure warning switches.

ENGINE MOUNTS

4 in-line adjustable high grade anti-vibration.

MAXIMUM INSTALLATION ANGLE

15° rear down

DRY WEIGHT LESS TRANSMISSION

450 series: 1375 lbs.

EXHAUST OUTLET

6" water jacketed 316L stainless.

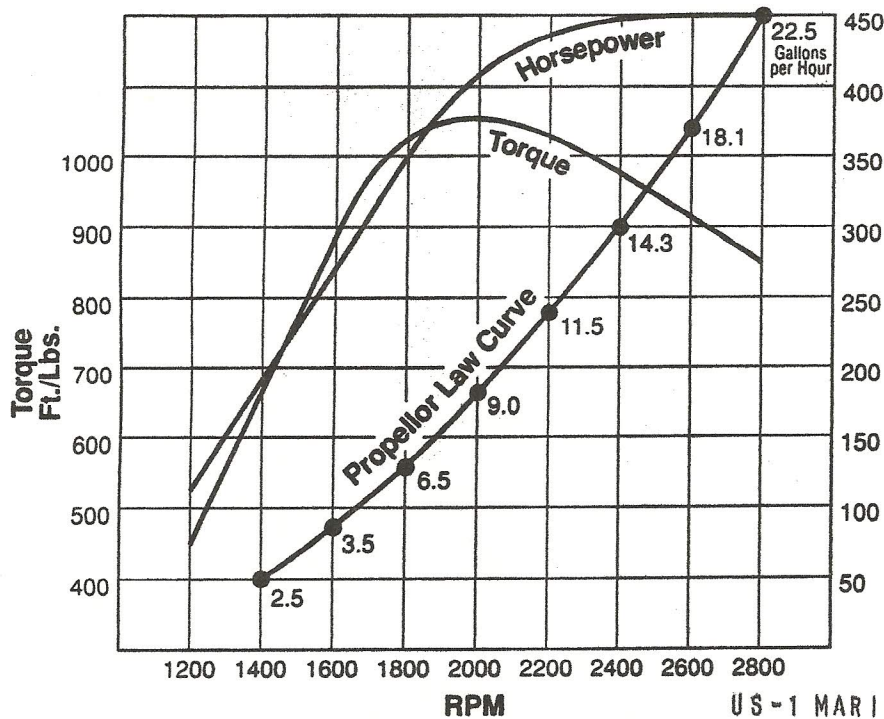
TRANSMISSIONS

Available upon request.

QUALITY CONTROL TESTING

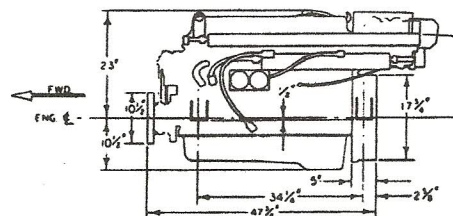
All engines fully run-in on dynamometer before delivery.

MERLIN 450 7.8 LITRE

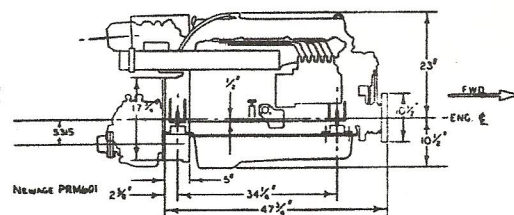


To SAEJ1349 standards.
Rating conditions of 110°F.

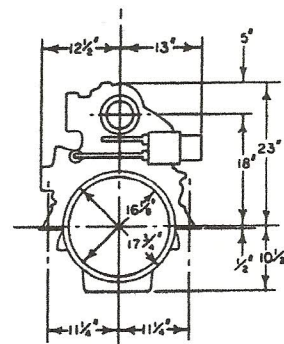
US-1 MARINE PARTS
1815 NO US-1
ORMOND BCH, FL 32174
386 676 1140



Left Side View



Right Side View



Rear View

Merlin Marine Engine Corporation

1341 Southwest 21st Terrace • Fort Lauderdale, Florida 33312 • (305) 584-6600